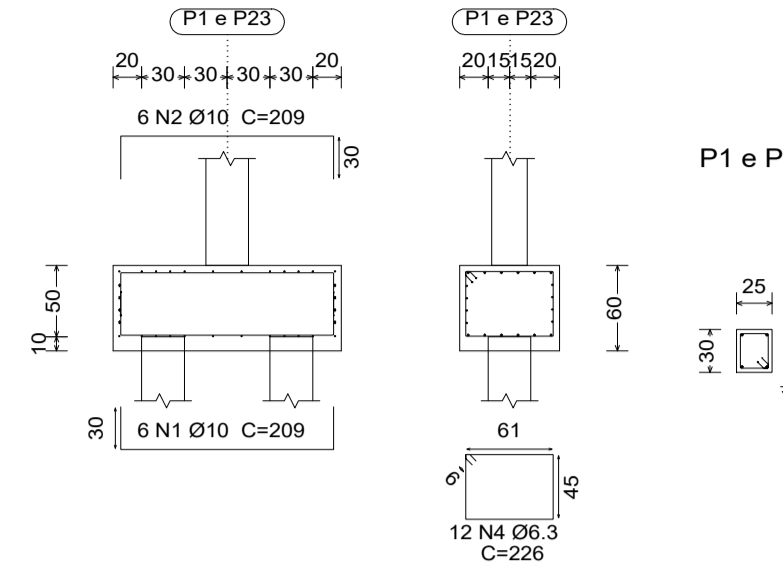
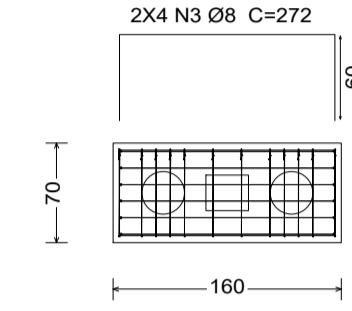


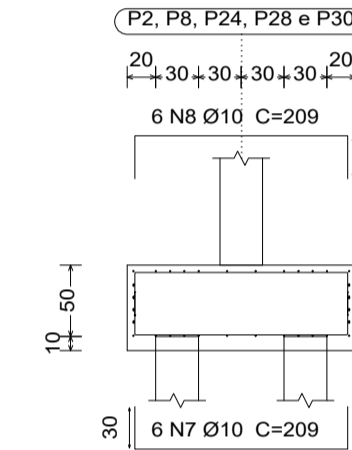
P1 e P23



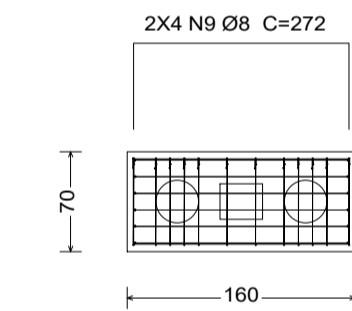
Estacas: est



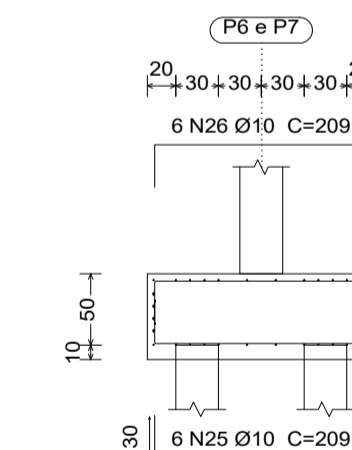
P2, P8, P24, P28 e P30



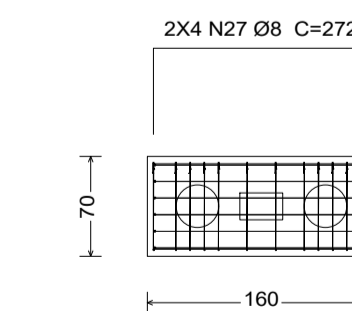
Estacas: est



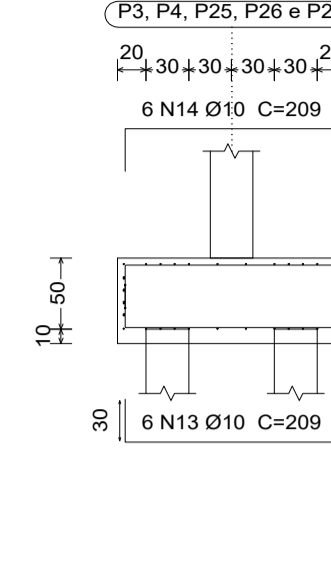
P6 e P7



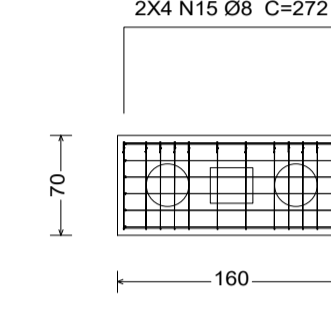
Estacas: est



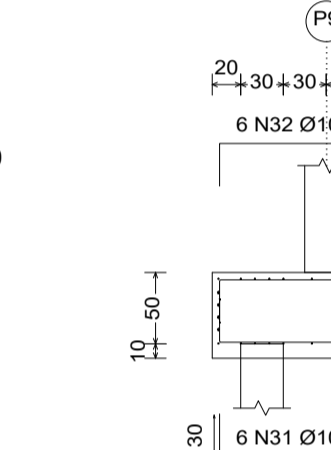
P3, P4, P25, P26 e P27



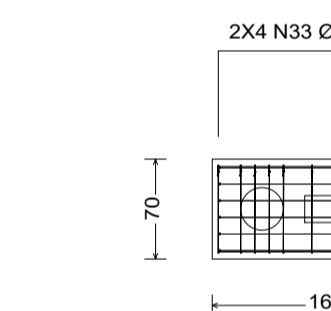
Estacas: est



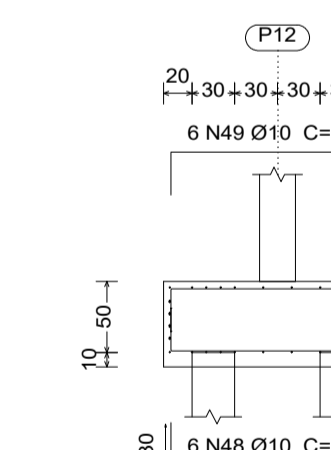
P9



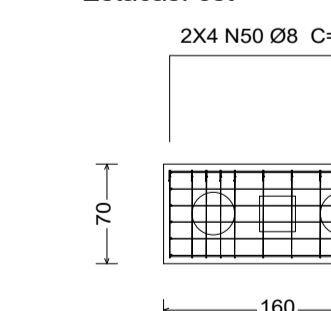
Estacas: est



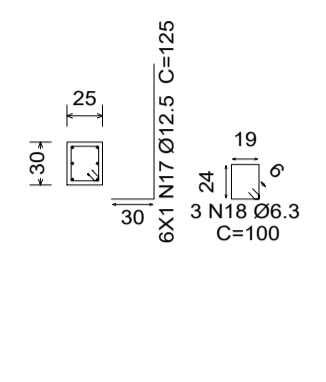
P12



Estacas: est



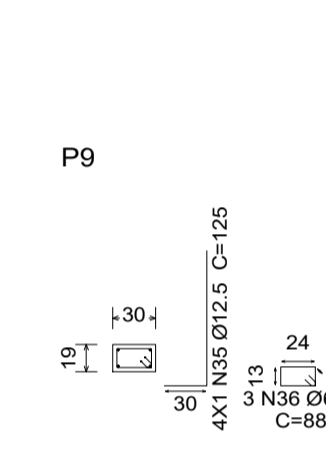
P3, P4, P25, P26 e P27



Estacas: est



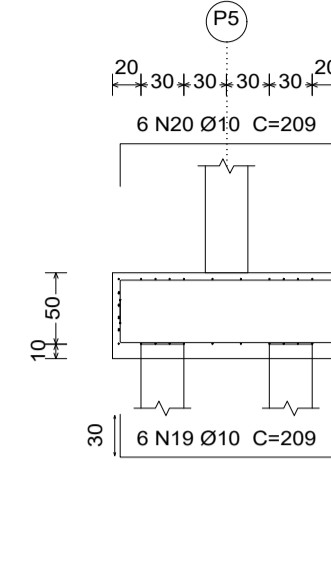
P9



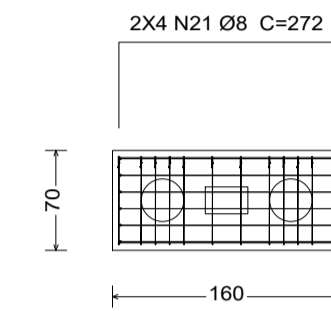
Estacas: est



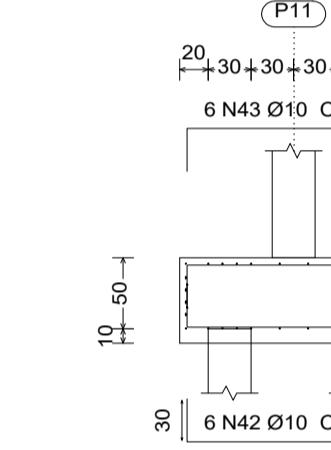
P5



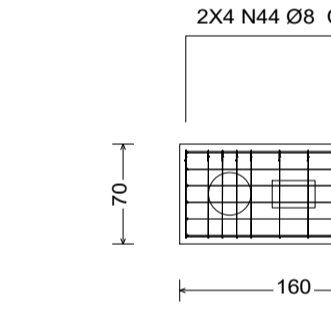
Estacas: est



P11



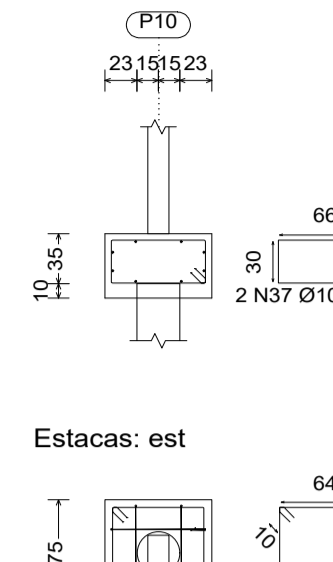
Estacas: est



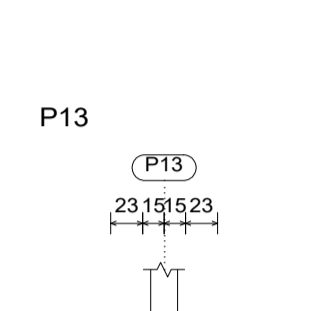
NOTAS:

- TODAS AS DIMENSÕES ESTÃO EM CENTÍMETROS, (E.A.).
- O FCK UTILIZADO É DE 30 MPa.
- DEVERÁ SER ADICIONADO ADITIVO IMPERMEABILIZANTE (REF. VIAPOL) EM TODO CONCRETO UTILIZADO NAS FUNDAÇÕES, VIGAS BALDRAMES E PILARES.
- DEVERÃO SER UTILIZADOS ESPAÇADORES DE 30 mm DE PVC, PARA GARANTIR O COBRIMENTO DA ARMADURA.
- TODAS AS PARTES DA FUNDAÇÃO EM CONTATO COM O SOLO DEVEM SER CONCRETADAS SOBRE UM LASTRO DE CONCRETO NÃO ESTRUTURAL COM ESPESURA MÍNIMA DE 5 cm.
- ADOTAR SLUMP COMPATÍVEL COM O CRITÉRIO DE LANÇAMENTO.
- TODO CONCRETO UTILIZADO NA OBRA DEVERÁ SER OBJETO DE CONTROLE TECNOLÓGICO PELA EMPRESA CONSTRUTORA.
- ESTE PROJETO FOI ELABORADO DE FORMA A ATENDER NBR 6122/2010 E 6118/2014.
- O REATERRO SOBRE OS BLOCOS É NECESSÁRIO PARA A ESTABILIZAÇÃO DOS MESMOS, PORTANTO, ESTAS SÓ PODERÃO SER SOLICITADOS PLENAMENTE APÓS OS REATERROS CONCLUÍDOS.

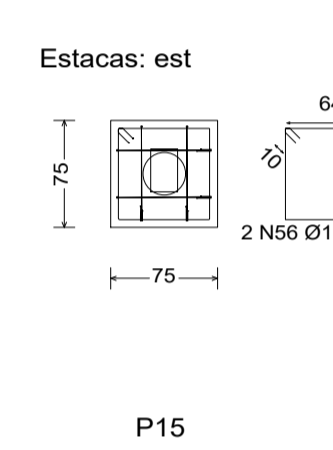
P10



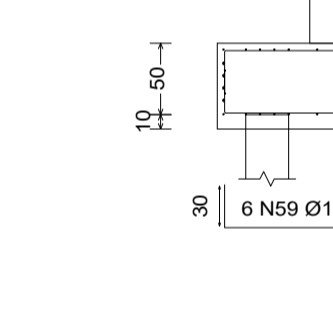
Estacas: est



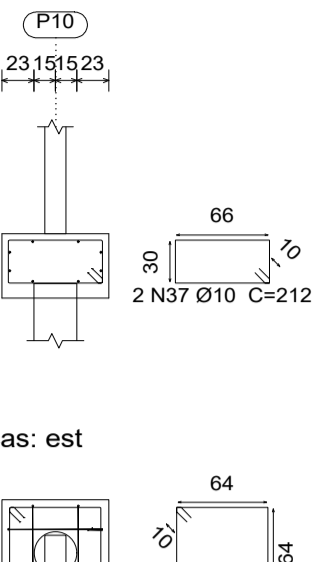
P13



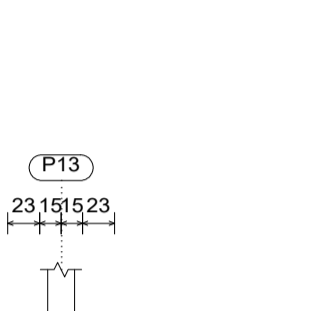
Estacas: est



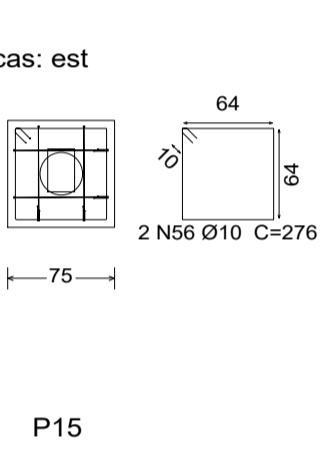
P10



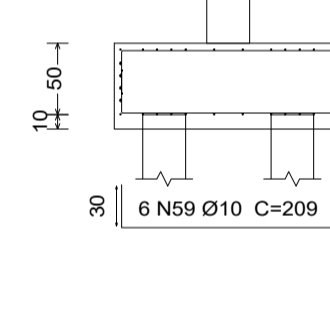
Estacas: est



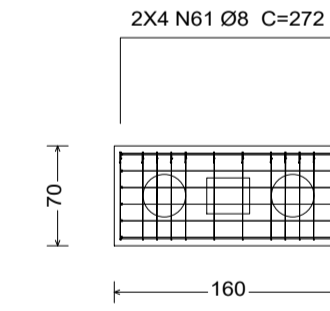
P15



Estacas: est



Estacas: est



Elemento	Pos.	Diam.	Q.	Dob.	Reita	Dob.	Comp.	Total	CA-50	CA-60	
		(cm)		(cm)	(cm)	(cm)	(cm)	(cm)	(kg)	(Kg)	
P1=P23	1	Ø10	6	30	149	30	209	1254	7.7		
	2	Ø10	6	30	149	30	209	1254	7.7		
	3	Ø8	8	272	272	272	272	2176	8.6		
	4	Ø6.3	12	226	226	226	2712	6.6			
	5	Ø12.5	4	30	95	125	500	4.8			
	6	Ø6.3	3	100	100	100	300	0.7			
Total+10%:									39.7		
									79.4		
P2=P8=P24=P28=P30	7	Ø10	6	30	149	30	209	1254	7.7		
	8	Ø10	6	30	149	30	209	1254	7.7		
	9	Ø8	8	272	272	272	2176	8.6			
	10	Ø6.3	12	226	226	226	2712	6.6			
	11	Ø12.5	4	30	95	125	500	4.8			
	12	Ø6.3	3	100	100	100	300	0.7			
Total+10%:									39.7		
									198.5		
P3=P4=P25=P26=P27	13	Ø10	6	30	149	30	209	1254	7.7		
	14	Ø10	6	30	149	30	209	1254	7.7		
	15	Ø8	8	272	272	272	2176	8.6			
	16	Ø6.3	12	226	226	226	2712	6.6			
	17	Ø12.5	4	30	95	125	500	4.8			
	18	Ø6.3	3	100	100	100	300	0.7			
Total+10%:									42.4		
									212.0		
P5	19	Ø10	6	30	149	30	209	1254	7.7		
	20	Ø10	6	30	149	30	209	1254	7.7		
	21	Ø8	8	272	272	272	2176	8.6			
	22	Ø6.3	12	226	226	226	2712	6.6			
	23	Ø16	4	30	108	138	552	8.7			
	24	Ø6.3	3	88	88	88	264	0.6			
Total+10%:									43.9		
P6=P7	25	Ø10	6	30	149	30	209	1254	7.7		
	26	Ø10	6	30	149	30	209	1254	7.7		
	27	Ø8	8	272	272	272	2176	8.6			
	28	Ø6.3	12	226	226	226	2712	6.6			
	29	Ø12.5	4	30	95	125	500	4.8			
	30	Ø6.3	3	88	88	88	264	0.6			
Total+10%:									39.6		
									79.2		
P9	31	Ø10	6	30	149	30	209	1254	7.7		
	32	Ø10	6	30	149	30	209	1254	7.7		
	33	Ø8	8	272	272	272	2176	8.6			
	34	Ø6.3	12	226	226	226	2712	6.6			
	35	Ø12.5	4	30	95	125	500	4.8			
	36	Ø6.3	3	88	88	88	264	0.6			
Total+10%:									39.6		
									79.2		
P10	37	Ø10	2	212	212	424	2.6				
	38	Ø10	2	208	208	416	2.6				
	39	Ø10	2	276	276	552	3.4				
	40	Ø12.5	6	79	109	554	6.3				
	41	Ø6.3	3	70	70	210	0.5				
	Total+10%:									16.9	
P11	42	Ø10	6	30	149	30	209	1254	7.7		
	43	Ø10	6	30	149	30	209	1254	7.7		
	44	Ø8	8	272	272	2176	8.6				
	45	Ø6.3	12	226	226	2712	6.6				
	46	Ø12.5	4	30	95	125	500	4.8			
	47	Ø6.3	3	88	88	264	0.6				
Total+10%:									44.9		
P12	48	Ø10	6	30	149	30	209	1254	7.7		
	49	Ø10	6	30	149	30	209	1254	7.7		
	50	Ø8	8	272	272	2176	8.6				
	51	Ø6.3	12	226	226	2712	6.6				
	52	Ø12.5	4	30	95	125	500	4.8			
	53	Ø6.3	3	90	90	270	0.7				
Total+10%:									39.7		
P13	54	Ø10	2	212	212	424	2.6				
	55	Ø10	2	208	208	416	2.6				
	56	Ø10	2	276	276	552	3.4				
	57	Ø12.5	4	79	109	436	4.2				
	58	Ø6.3	3	88	88	264	0.6				
	Total+10%:									14.7	
P15	59	Ø10	6	30	149	30	209	1254	7.7		
	60	Ø10	6	30	149	30	209	1254	7.7		
	61	Ø8	8	272	272	2176	8.6				
	62	Ø6.3	12	226	226	2712	6.6				
	63	Ø12.5	4	30	95	125	500	4.8			
	64	Ø6.3	3	100	100	300	0.7				
Total+10%:									39.7		
									79.4		
									06.3:	152.6	0.0
									Ø8:	180.5	0.0
									Ø10:	340.1	0.0
									Ø12.5:	125.7	0.0
									Ø16:	9.6	0.0
									Total:	808.5	0.0

REVISÕES			TÍTULO	
REV.	DATA	NOME	RESTAURANTE POPULAR "DORES DO INDAÍÁ"	
11			PROJETO	PROJETO ESTRUTURAL CONCRETO + FUNDAÇÃO
10			ENDEREÇO OBRA	RUA GUAJAJARAS, S/N - BAIRRO SÃO JOSÉ - DORES DO INDAÍÁ - MG
09			CONTRATANTE	MUNICÍPIO DE DORES DO INDAÍÁ
08			AUTOR DO PROJETO	THIAGO HENRIQUE FERREIRA
07			CONTEÚDO	DET. DOS BLOCOS
06			DATA	JULHO / 2023
05			ESCALA	INDICADAS
04			FOLHA	07/32
03			CAU / CREA	186.810/D
02				
01	14/07/2023	THIAGO		